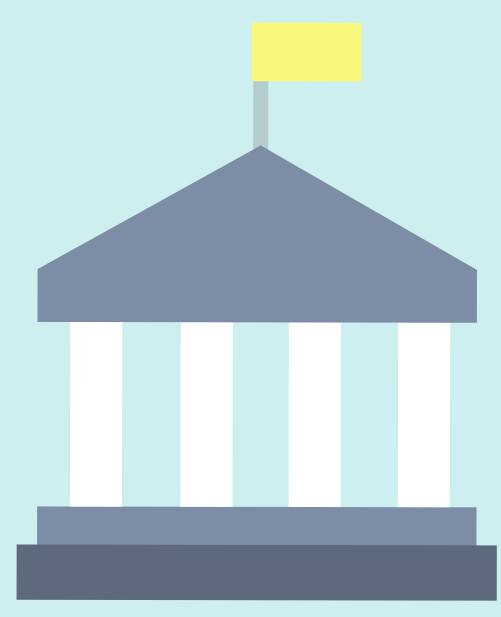


# The Big Picture

In 2017 alone the U.S. incurred **\$300 billion** in damages by disasters



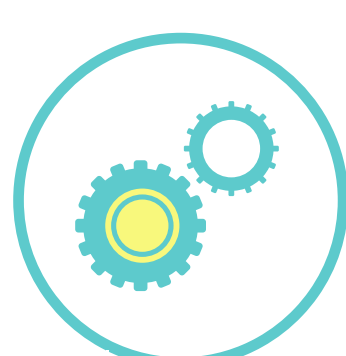
States and local authorities generally responsible

If federal aid is needed, the President can issue a **National Emergency or Major Disaster declaration**

**FEMA** is responsible for coordinating the federal response



FEMA pulls in various other federal agencies **depending on the need**



**The National Response Framework and the National Disaster Response Framework** are guides for FEMA's interagency work



In 2017, there were **16 National Emergency and 56 Major Disaster declarations issued**



**National Voluntary Organizations Active in Disaster (NVOAD)** is a coalition of over 70 organizations that coordinate efforts

## The Religion Factor



**About half** of NVOAD's organizations are faith-based



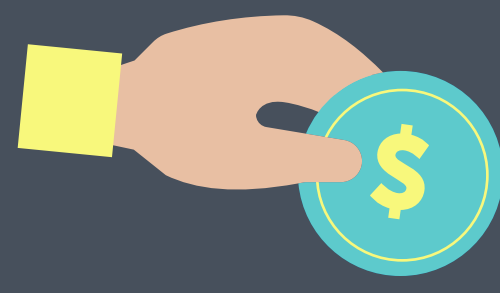
**About 75%** of NVOAD's efforts are carried out by faith-based organizations



**Nearly 1/3 of all U.S. households** donated to disaster relief efforts in faith-based 2017 and 2018 via a religious organization

## A Snapshot of 2017

**Hurricanes Harvey, Maria and Irma and California wildfires resulted in unprecedented damage** Just a few of the larger faith-based disaster relief organizations **spent a combined total of \$446 million on U.S. efforts**



**Does not count the hundreds of millions in aid sent overseas every year** through individual small donations collected at houses of worship

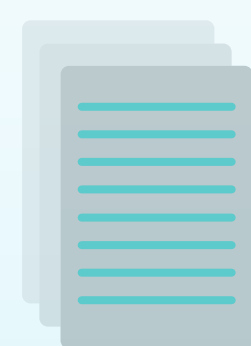


Catholic Charities alone spent **\$137 million** in the U.S. on disaster relief

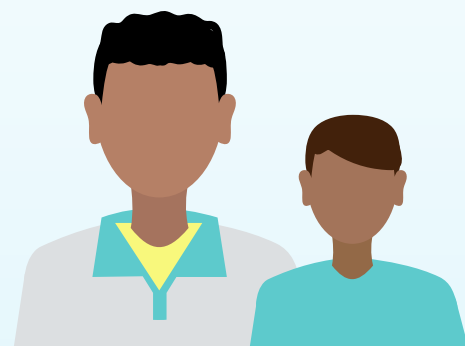


Salvation Army spent **\$102 million** in the U.S. on disaster relief

## Congregations and Faith-Based Organizations



Have an **existing network** for communicating warnings and evacuation instructions



Have an **expansive volunteer network** that can be readily engaged



Have experience working with **vulnerable populations**



Can immediately open a vast array of on-site facilities, **that can be used for disaster assistance**

They provide **meals, water, shelter, medical supplies, counseling and spiritual support.**

